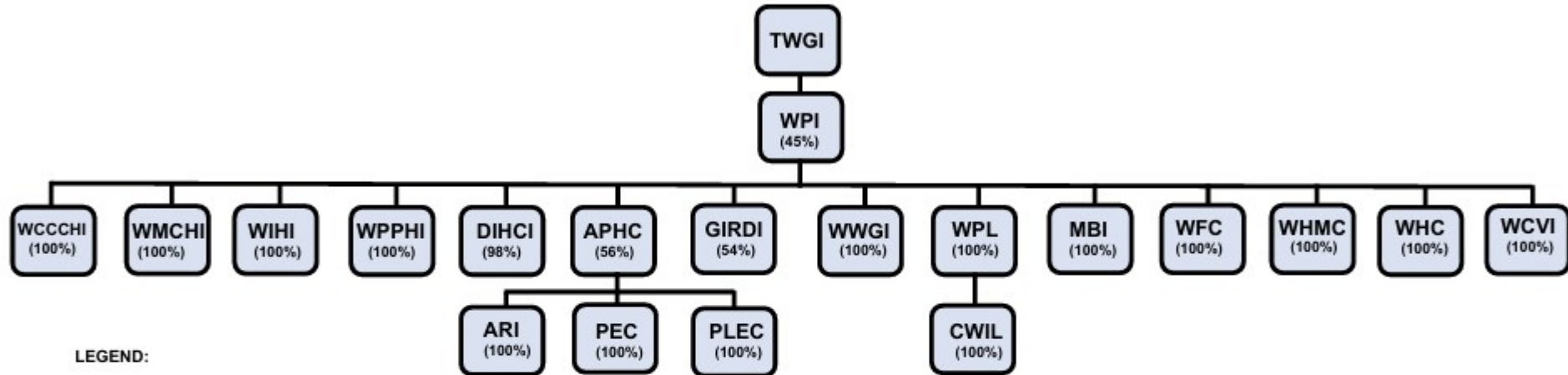


**WATERFRONT PHILIPPINES, INCORPORATED AND SUBSIDIARIES
SUPPLEMENTARY SCHEDULE REQUIRED UNDER THE REVISED SRC RULE 68**

**Map of Conglomerate
December 31, 2024**



LEGEND:

- TWGI - The Wellex Group, Inc.
- WPI - Waterfront Philippines, Incorporated
- WCCCHI - Waterfront Cebu City Casino Hotel, Incorporated
- WMCHI - Waterfront Mactan Casino Hotel, Incorporated
- WIHI - Waterfront Iloilo Hotel Inc.
- WPPHI - Waterfront Puerto Princesa Hotel, Inc.
- DIHCI - Davao Insular Hotel Company, Inc.
- APHC - Acesite (Phils.) Hotel Corporation (Doing business under the name and style of Waterfront Manila Hotel and Casino)
- ARI - Acesite Realty, Inc. (formerly CIMA Realty Phils., Inc.)
- PEC - Pavillion Enterprises Corp.
- PLEC - Pavillion Leisure and Entertainment Corp.
- GIRDI - Grand Ilocandia Resort and Development, Inc.
- WWGI - Waterfront Wellness Group, Inc.
- WPL - Waterfront Promotion Limited
- CWIL - Club Waterfront International Limited
- MBI - Mayo Bonanza, Inc.
- WFC - Waterfront Food Concepts, Inc.
- WHMC - Waterfront Hotel Management Corp.
- WHC - Waterfront Horizon Corporation (formerly Waterfront Entertainment Corporation)
- WCVI - Waterfront Cebu Ventures, Inc.